

Photo © MTA

Q

**Second Avenue - 86th Street
(Manhattan)**

Chuck Close

Subway Portraits, 2017

Art on entry / exit nord & south and mezzanine



Glass and ceramic mosaic, ceramic tile

Chuck Close created twelve large-scale portraits for 86th Street that are based on the artist's painstakingly detailed photo-based portrait paintings. His various painting techniques have been interpreted in ten works as mosaic, and in two as ceramic tile. Ten of the artworks measure close to nine feet high. The people portrayed represent the variety of individuals that pass through the MTA system, and are chiefly cultural figures that have frequently been subjects in his artistic career spanning over half a century, including Philip Glass, Zhang Huan, Kara Walker, Alex Katz, Cecily Brown, Cindy Sherman, and Lou Reed, as well as two distinct self-portraits.

Chuck Close is an internationally acclaimed painter and printmaker whose artwork has been featured in hundreds of exhibitions as well as private and permanent museum collections around the world. He is renowned for creating portraits by using many innovative techniques within a grid, such as strokes of color or meticulous detail. He was the recipient of a National Medal of the Arts presented by President Clinton, and was appointed by President Obama to serve on the President's Committee on the Arts and Humanities. Chuck Close lives and works in New York City.

— MTA Arts & Design

Die Chuck Close Portraits bestechen durch die ausserordentliche Qualität der Mosaik. Dabei wird der Reichtum einer eigens von Close kreierten Palette der Möglichkeiten – an Mosaiksteinen und Techniken, wie z.B. variable Formen und Steingrößen, Glasuren, Färbungen, Schattierungen, sowie auch bedruckte Platten – zum integralen Instrument der künstlerischen Ausdrucksform. Jedes Porträt fasziniert durch seine ganz eigene Sprache der Bildpartikel, die meisterhaft zum Einsatz gebracht, eine stark individualisierte Aussagekraft herausschält und greifbar macht.

Als Gesamteindruck dieser Subway Installation vermittelt sich das Gefühl in einem modernen Museum zu sein, einem illustren Kunstort, jedoch ohne die Prätension. So gelingt tatsächlich «every day» Art für die Transitmassen zum Anfassen. Phantastisch! Augenfälliger Zuspruch Vieler, die innehalten, zeugt davon.

— Renate Stürmer



New York City Subway 31 Contemporary Arts & Design Stations Tour: Station 4

Second Avenue - 86th Street (Manhattan) | Chuck Close | Subway Portraits | 2017

Documentation

001



002



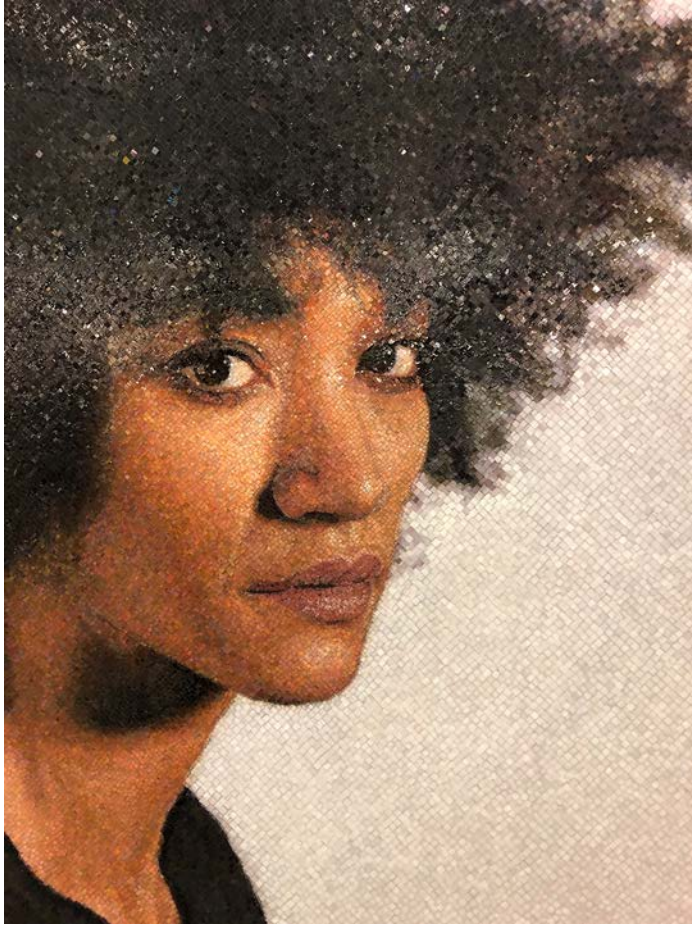
003



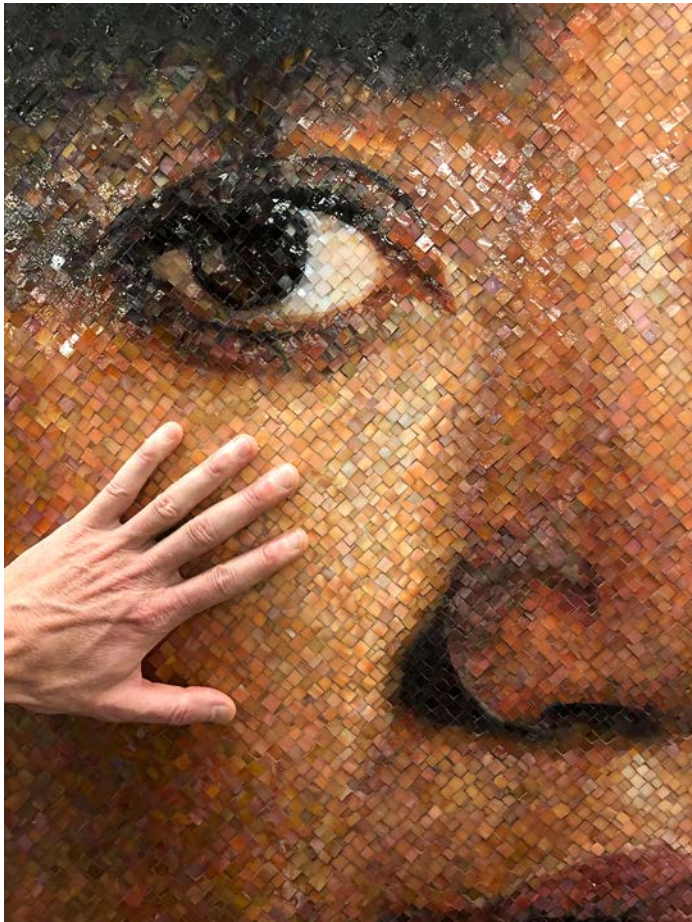
004



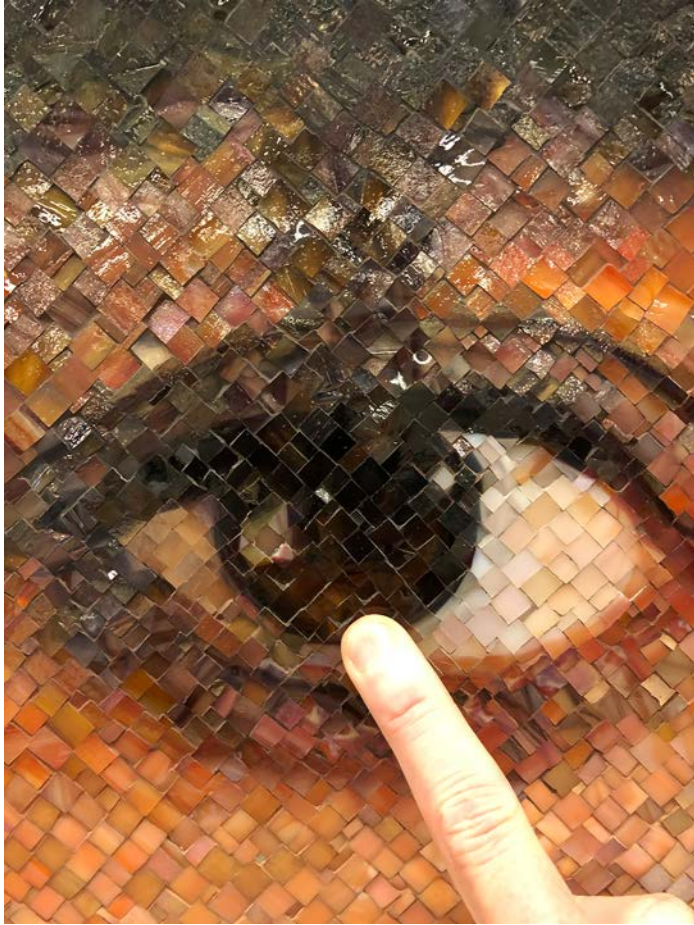
005



006



007



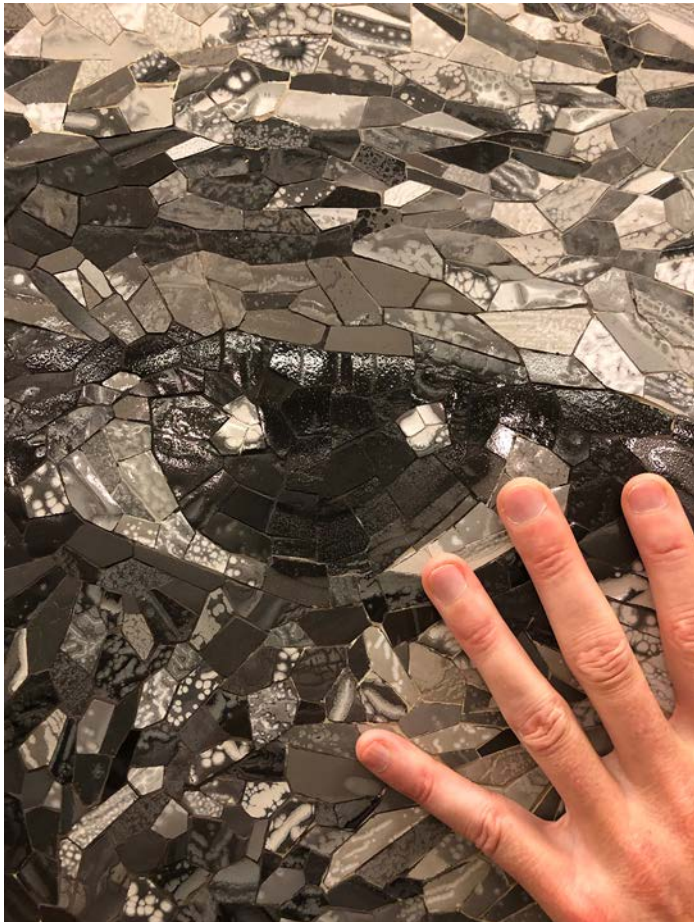
008



009



010



011



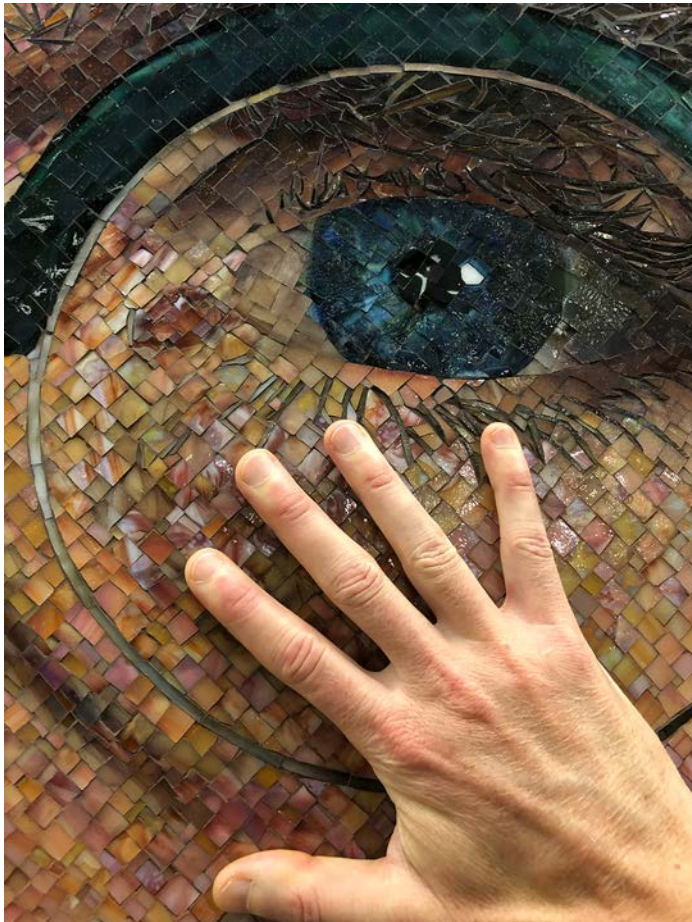
012



013



014

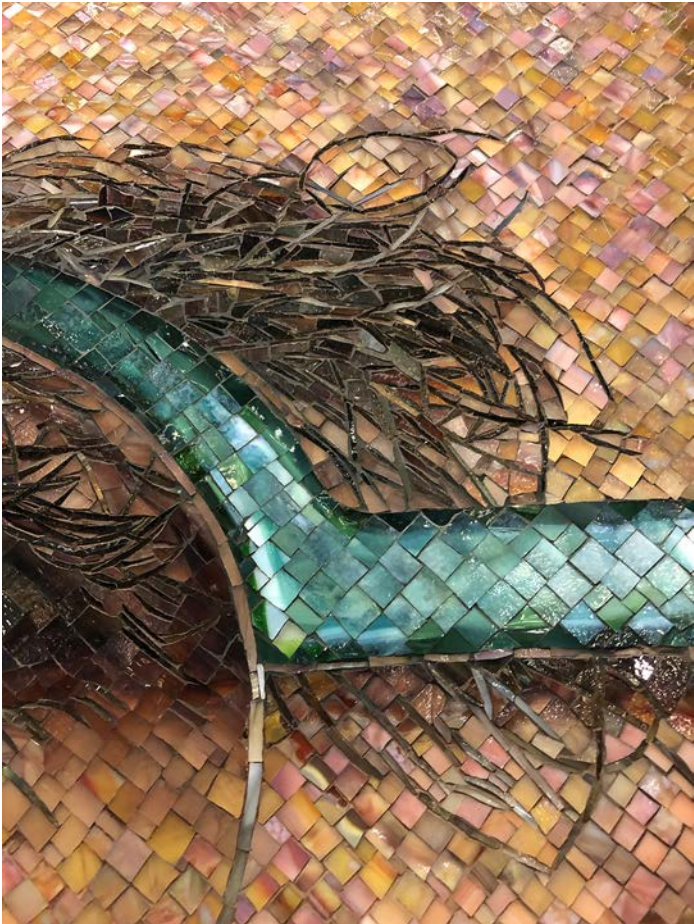


New York City Subway **31** Contemporary Arts & Design Stations Tour: Station **4**

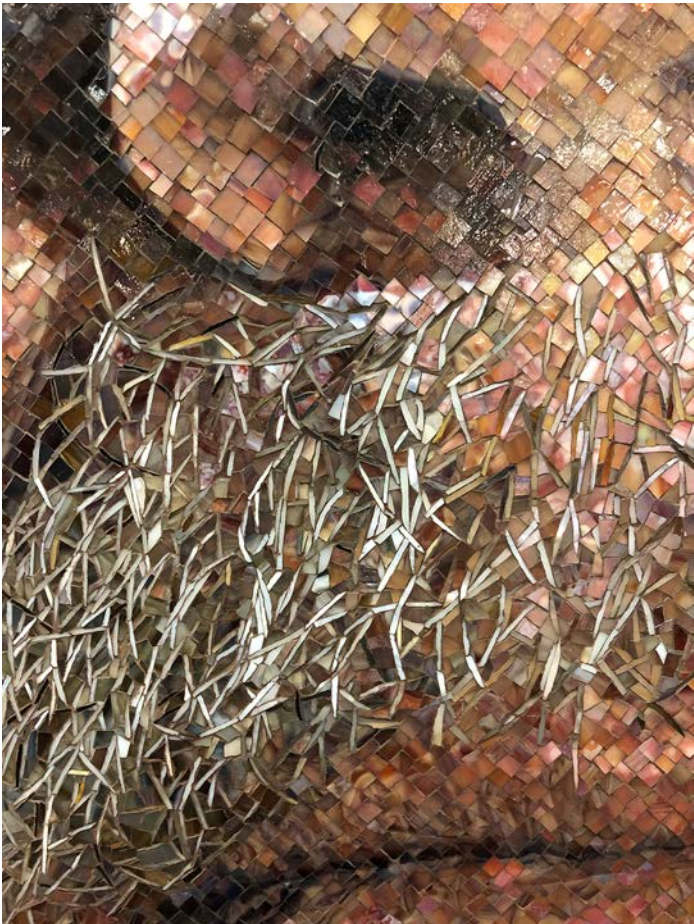
Second Avenue - 86th Street (Manhattan) | Chuck Close | Subway Portraits | 2017

Documentation

015



016



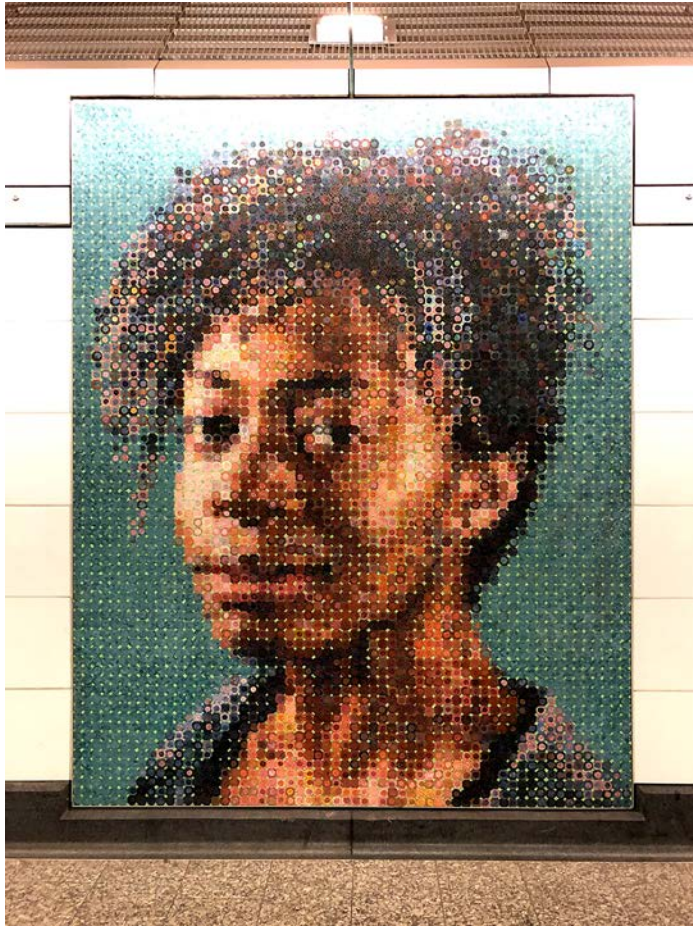
Photos Renate Sturmer & Patrick J. Schmeper September 2019

New York City Subway 31 Contemporary Arts & Design Stations Tour: Station 4

Second Avenue - 86th Street (Manhattan) | Chuck Close | Subway Portraits | 2017

Documentation

017



018



New York City Subway 31 Contemporary Arts & Design Stations Tour: Station 4

Second Avenue - 86th Street (Manhattan) | Chuck Close | Subway Portraits | 2017

Documentation

019



020



Photos Renate Sturmer & Patrick J. Schmeper September 2019

New York City Subway **31** Contemporary Arts & Design Stations Tour: Station **4**

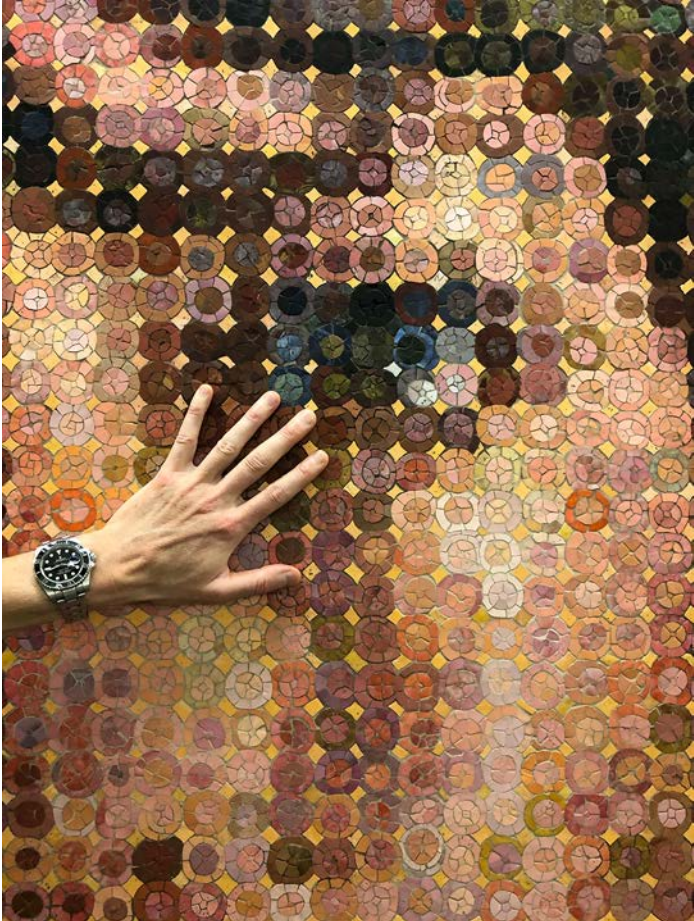
Second Avenue - 86th Street (Manhattan) | Chuck Close | Subway Portraits | 2017

Documentation

021



022



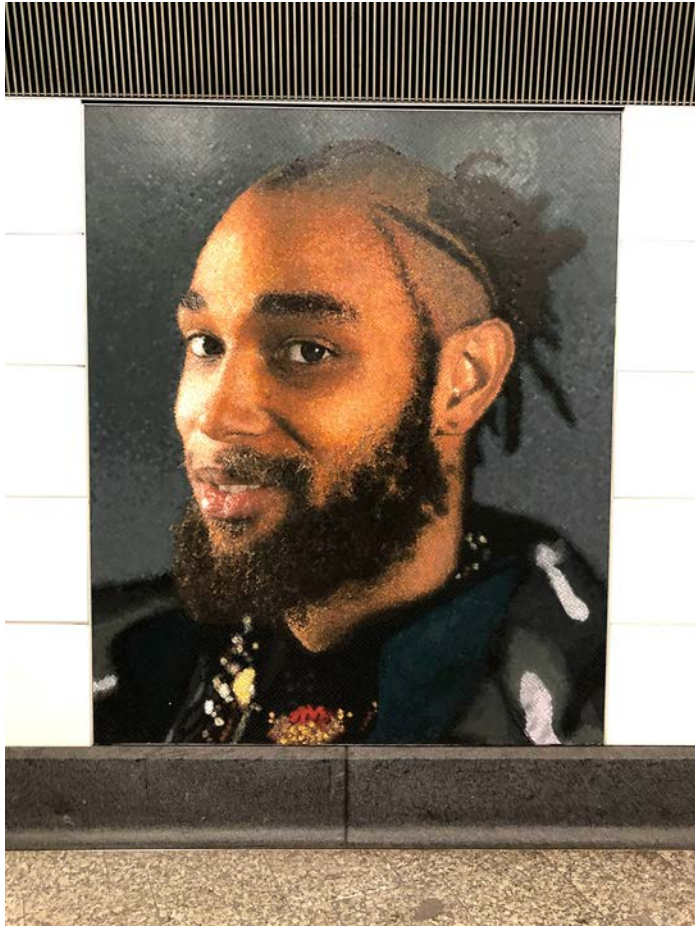
Photos Renate Sturmer & Patrick J. Schmeper September 2019

New York City Subway 31 Contemporary Arts & Design Stations Tour: Station 4

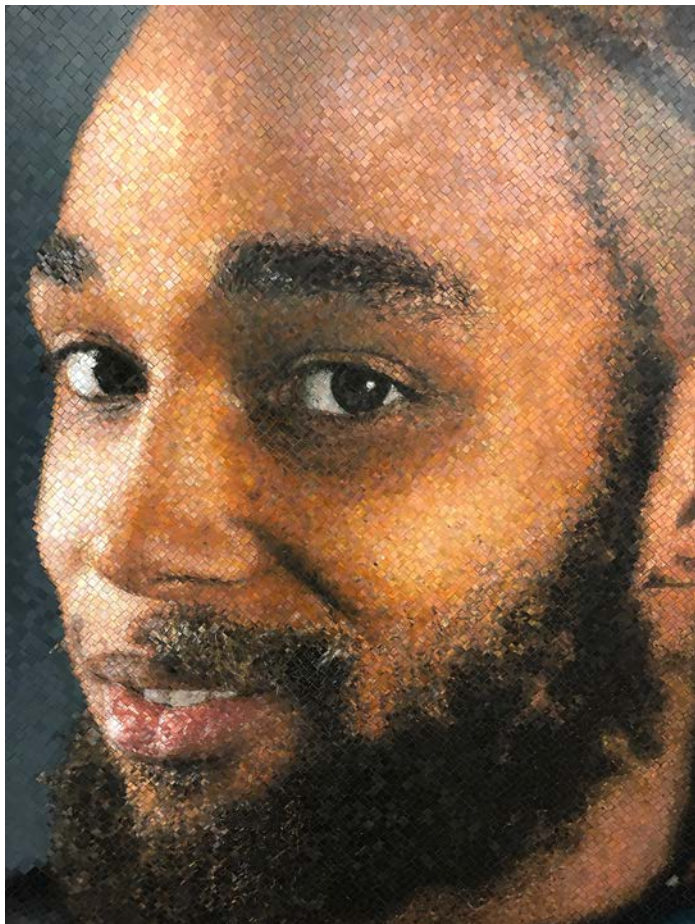
Second Avenue - 86th Street (Manhattan) | Chuck Close | Subway Portraits | 2017

Documentation

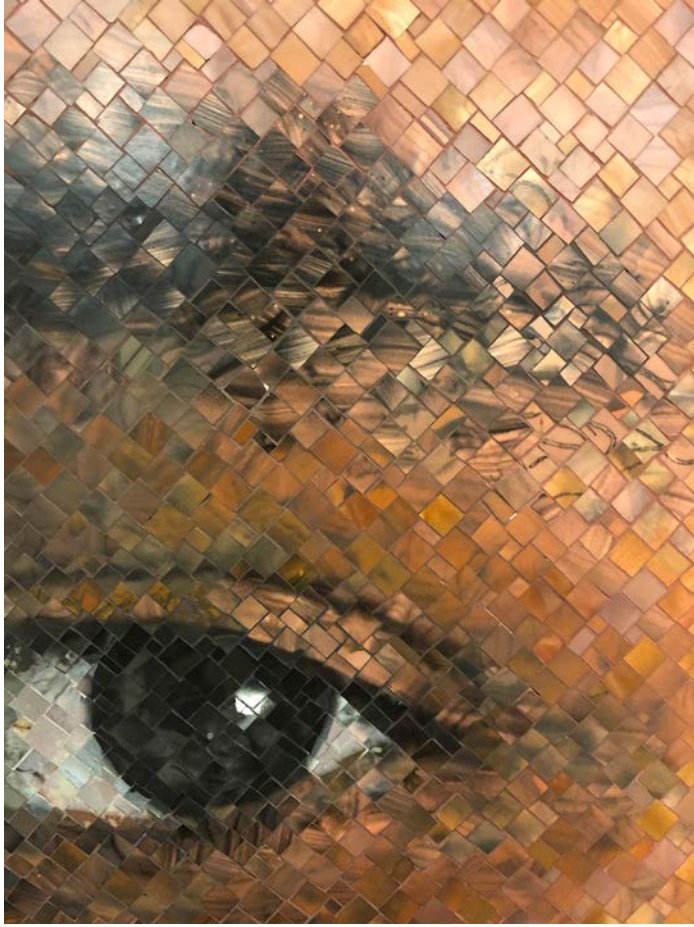
023



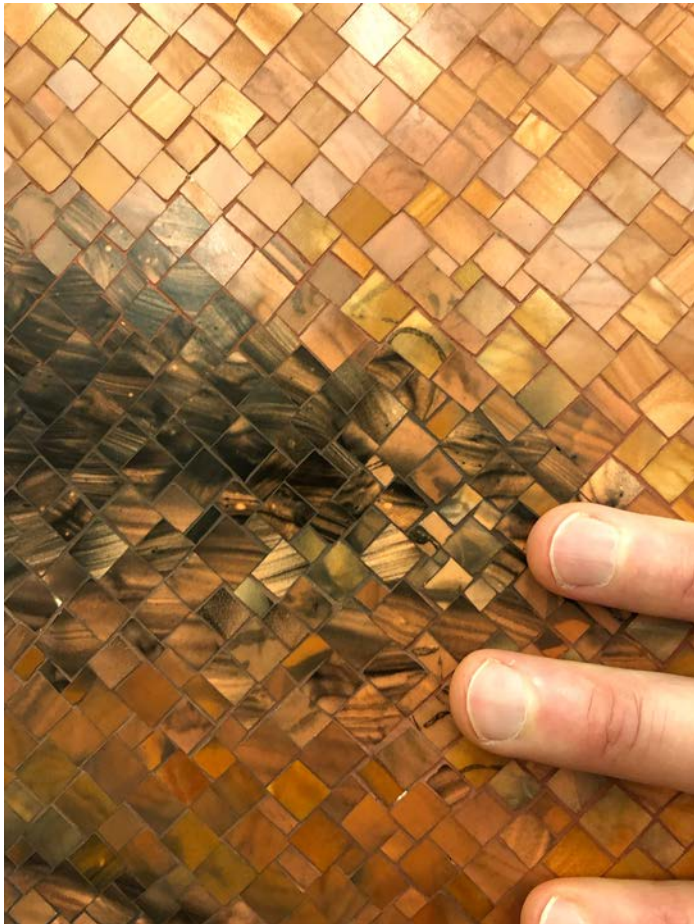
024



025



026



027



028



New York City Subway 31 Contemporary Arts & Design Stations Tour: Station 4

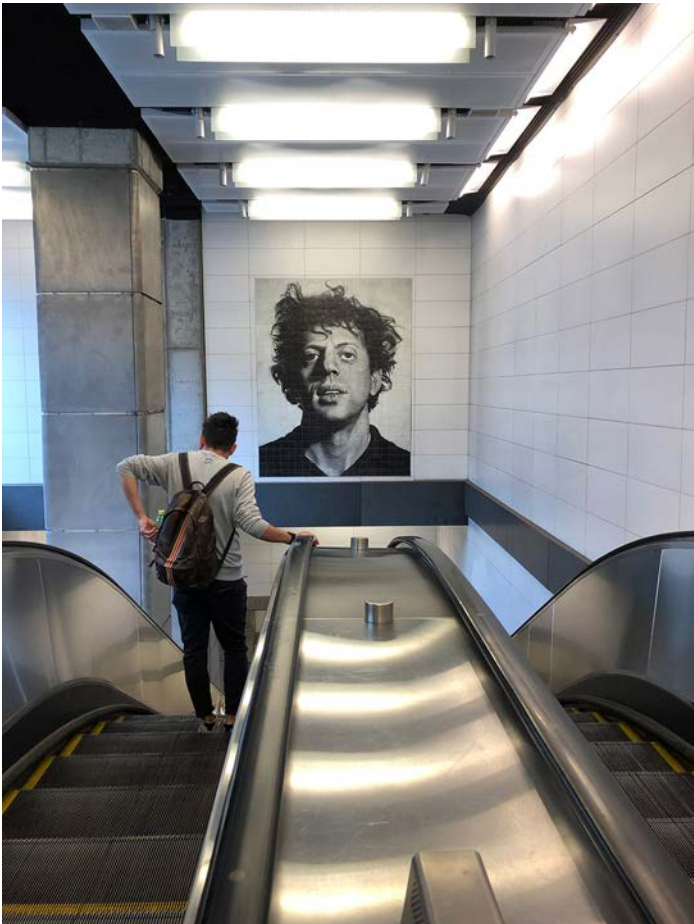
Second Avenue - 86th Street (Manhattan) | Chuck Close | Subway Portraits | 2017

Documentation

029



030



Photos Renate Sturmer & Patrick J. Schmeper September 2019

031



032



New York City Subway **31** Contemporary Arts & Design Stations Tour: Station 4

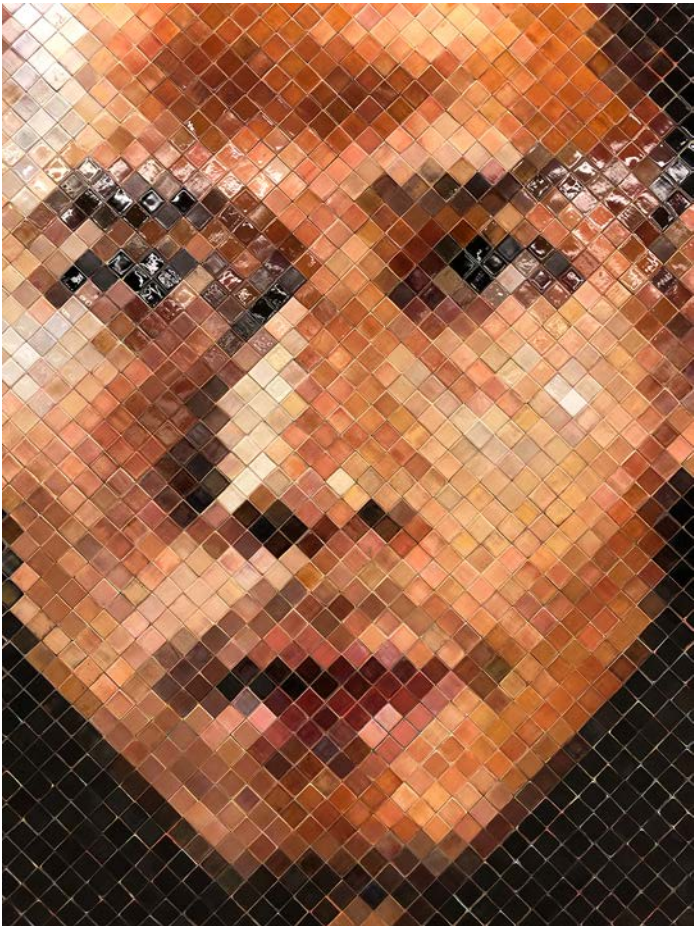
Second Avenue - 86th Street (Manhattan) | Chuck Close | Subway Portraits | 2017

Documentation

033



034



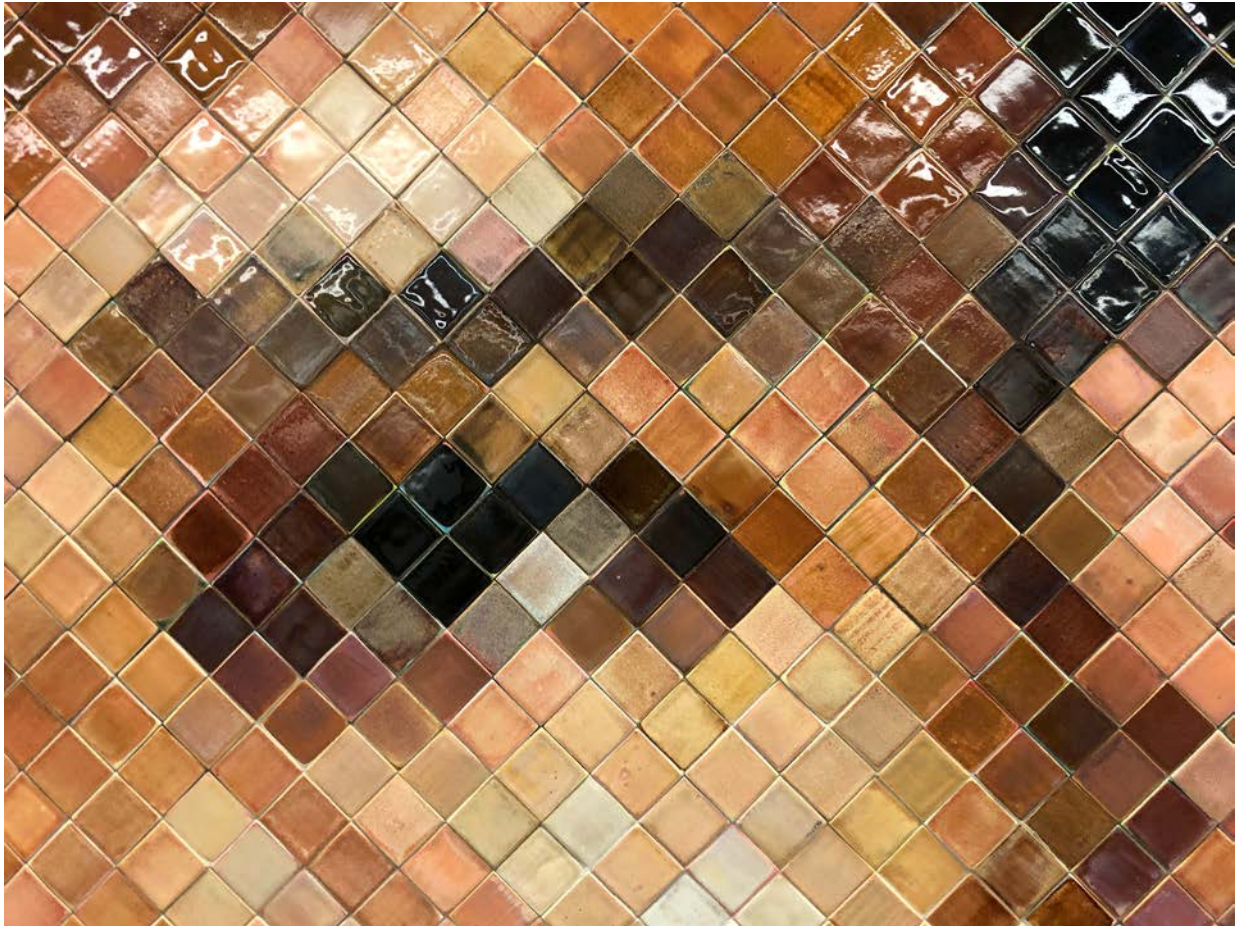
Photos Renate Sturmer & Patrick J. Schmeper September 2019

New York City Subway 31 Contemporary Arts & Design Stations Tour: Station 4

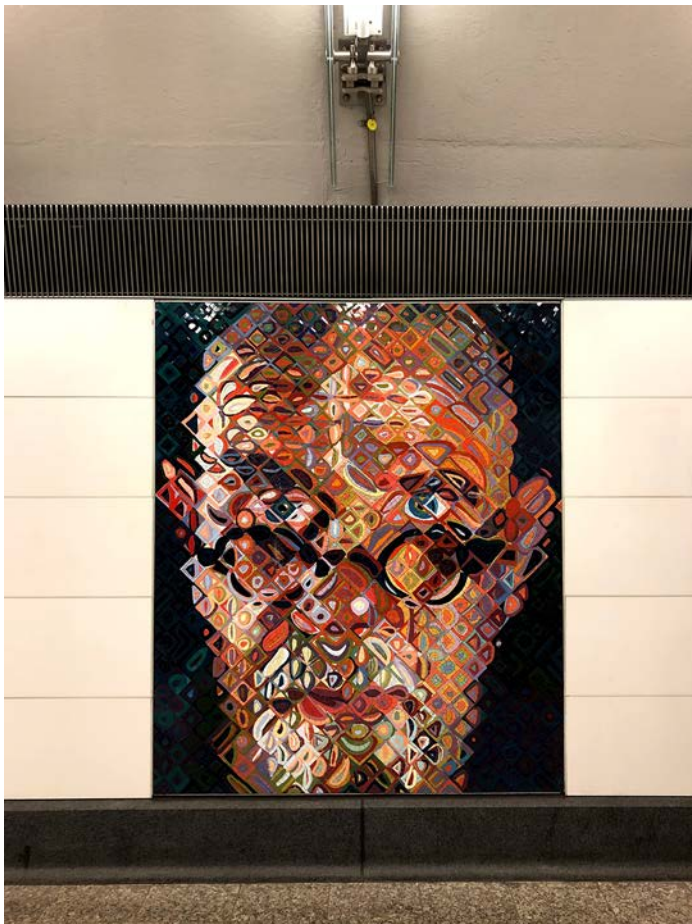
Second Avenue - 86th Street (Manhattan) | Chuck Close | Subway Portraits | 2017

Documentation

035



036



Photos Renate Sturmer & Patrick J. Schmeper September 2019

New York City Subway 31 Contemporary Arts & Design Stations Tour: Station 4

Second Avenue - 86th Street (Manhattan) | Chuck Close | Subway Portraits | 2017

Documentation

037



038



New York City Subway 31 Contemporary Arts & Design Stations Tour: Station 4

Second Avenue - 86th Street (Manhattan) | Chuck Close | Subway Portraits | 2017

Documentation

039



040



New York City Subway 31 Contemporary Arts & Design Stations Tour: Station 4

Second Avenue - 86th Street (Manhattan) | Chuck Close | Subway Portraits | 2017

Documentation

041



042

