



R W

Prince Street (Manhattan)

Janet Zweig and Edward del Rosario
Carrying On, 2004

Art on either platform



Steel, marble, and slate frieze on platform walls

Carrying On is composed of almost two hundred silhouettes of people hauling «stuff» with them as they walk the city streets. The artist team worked from photographs of individuals moving around the city and in and out of the subway. According to the artists, the title of Carrying On can be read in a variety of ways. «People on the streets of New York are almost always carrying something, sometimes something huge and outlandish. After the 9/11 tragedy, New Yorkers felt that they must carry on with their lives. Finally, New Yorkers are notoriously opinionated and lively; they really do carry on.» The result is a linear narrative work of miniature figures, each of whom has a story it is up to the viewer to discern. It is an engaging work that represents the community and updates the materials used on subway station walls, with its waterjet-cut steel and marble, that achieves both precision and a modern take on the traditional frieze.

— MTA Arts & Design

Diese Installation symbolisiert den New Yorker Alltag wie keine andere, auf subtile – ja kleinteilig charmante Weise. Die etwa 200 Miniaturen – aus dem Leben gegriffene Silhouetten von Menschen, die zumeist in Bewegung sind und beladen – veranschaulichen den alltäglichen Weg der Betriebsamkeiten; das Kontinuum wird unterstrichen durch die Platzierung auf einer fortlaufenden Linie. Was hier in reger Vielfalt gekonnt typisiert und zum Ausdruck gebracht wird: Ein jeder hat sein Päckchen zu tragen – real und metaphorisch. Die aus Stahl geschnittenen Vignetten wirken überaus realistisch und vermitteln dennoch, in ihrer Aneinanderreihung oder auch Gegenüberstellung, ein erstaunliches Maß an situativem Humor, der sofort Bezüge herstellt, Assoziationen weckt und kleine Geschichten erzählt.

— Renate Stürmer

I count 191 art pieces...

— Patrick J. Schnieper



New York City Subway 31 Contemporary Arts & Design Stations Tour: Station 10

Prince Street (Manhattan) | Janet Zweig and Edward del Rosario | Carrying On | 2004

Documentation

001



002



New York City Subway 31 Contemporary Arts & Design Stations Tour: Station 10

Prince Street (Manhattan) | Janet Zweig and Edward del Rosario | Carrying On | 2004

Documentation

003



004



New York City Subway 31 Contemporary Arts & Design Stations Tour: Station 10

Prince Street (Manhattan) | Janet Zweig and Edward del Rosario | Carrying On | 2004

Documentation

005



006



New York City Subway 31 Contemporary Arts & Design Stations Tour: Station 10

Prince Street (Manhattan) | Janet Zweig and Edward del Rosario | Carrying On | 2004

Documentation

007



008



New York City Subway **31** Contemporary Arts & Design Stations Tour: Station **10**

Prince Street (Manhattan) | Janet Zweig and Edward del Rosario | Carrying On | 2004

Documentation

009



010



New York City Subway 31 Contemporary Arts & Design Stations Tour: Station 10

Prince Street (Manhattan) | Janet Zweig and Edward del Rosario | Carrying On | 2004

Documentation

011



012

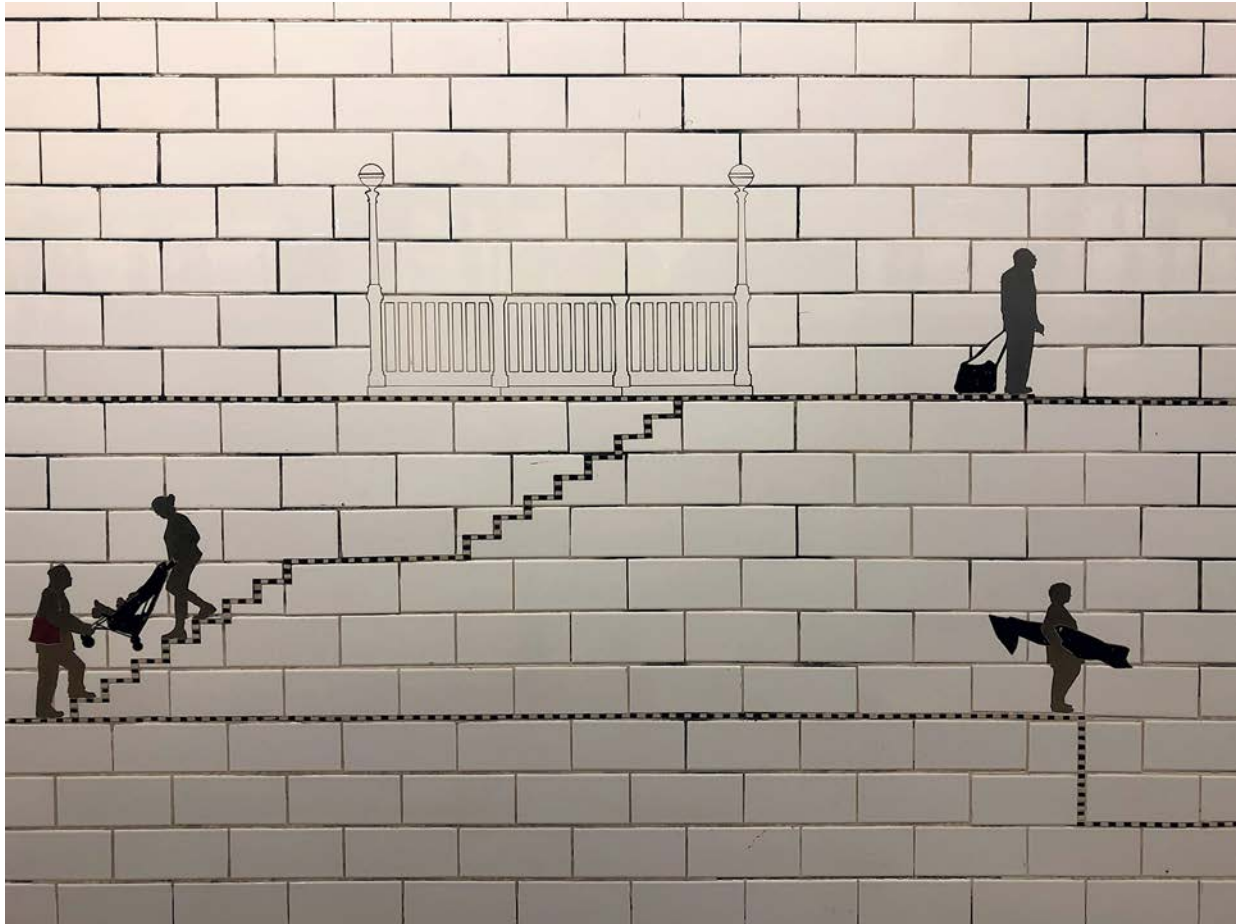


New York City Subway 31 Contemporary Arts & Design Stations Tour: Station 10

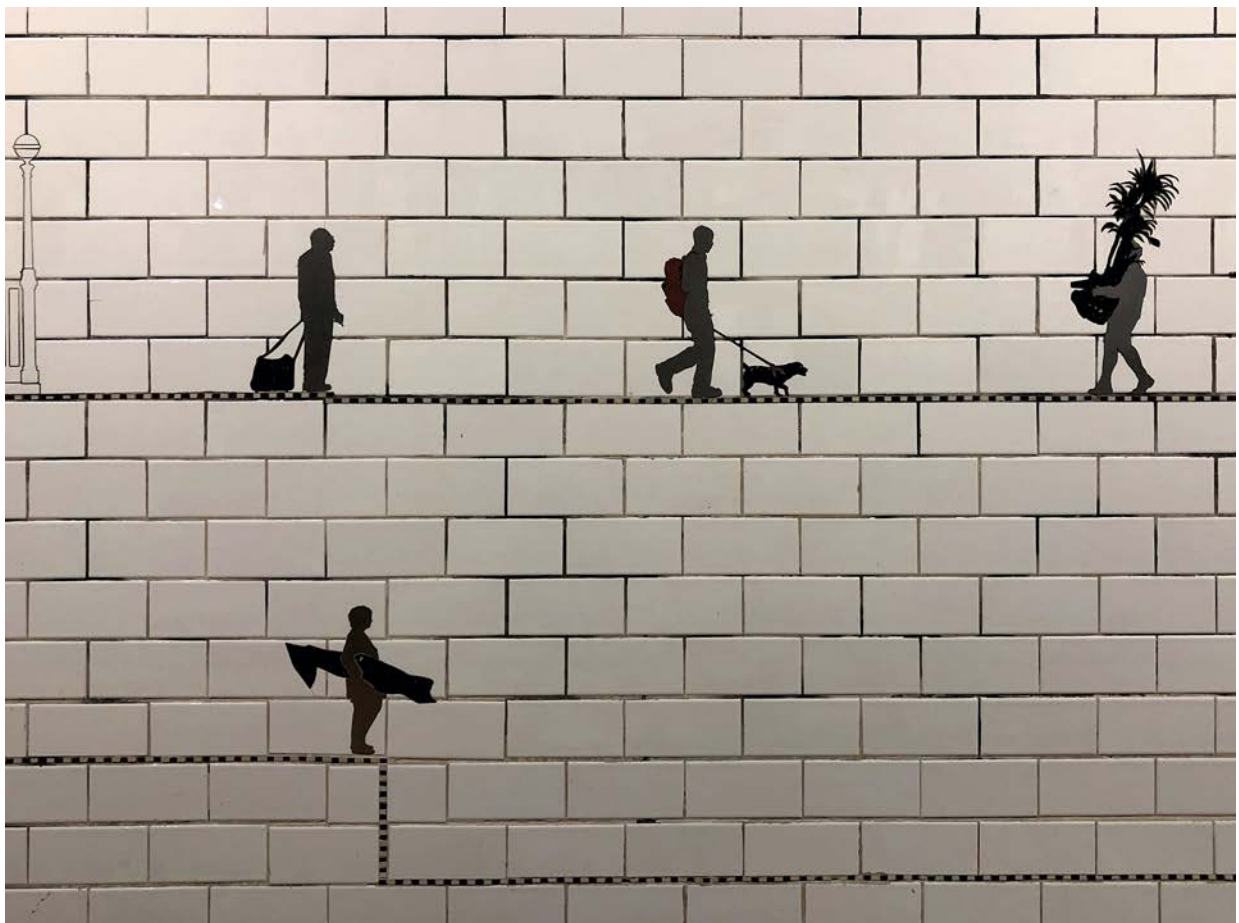
Prince Street (Manhattan) | Janet Zweig and Edward del Rosario | Carrying On | 2004

Documentation

013



014



New York City Subway 31 Contemporary Arts & Design Stations Tour: Station 10

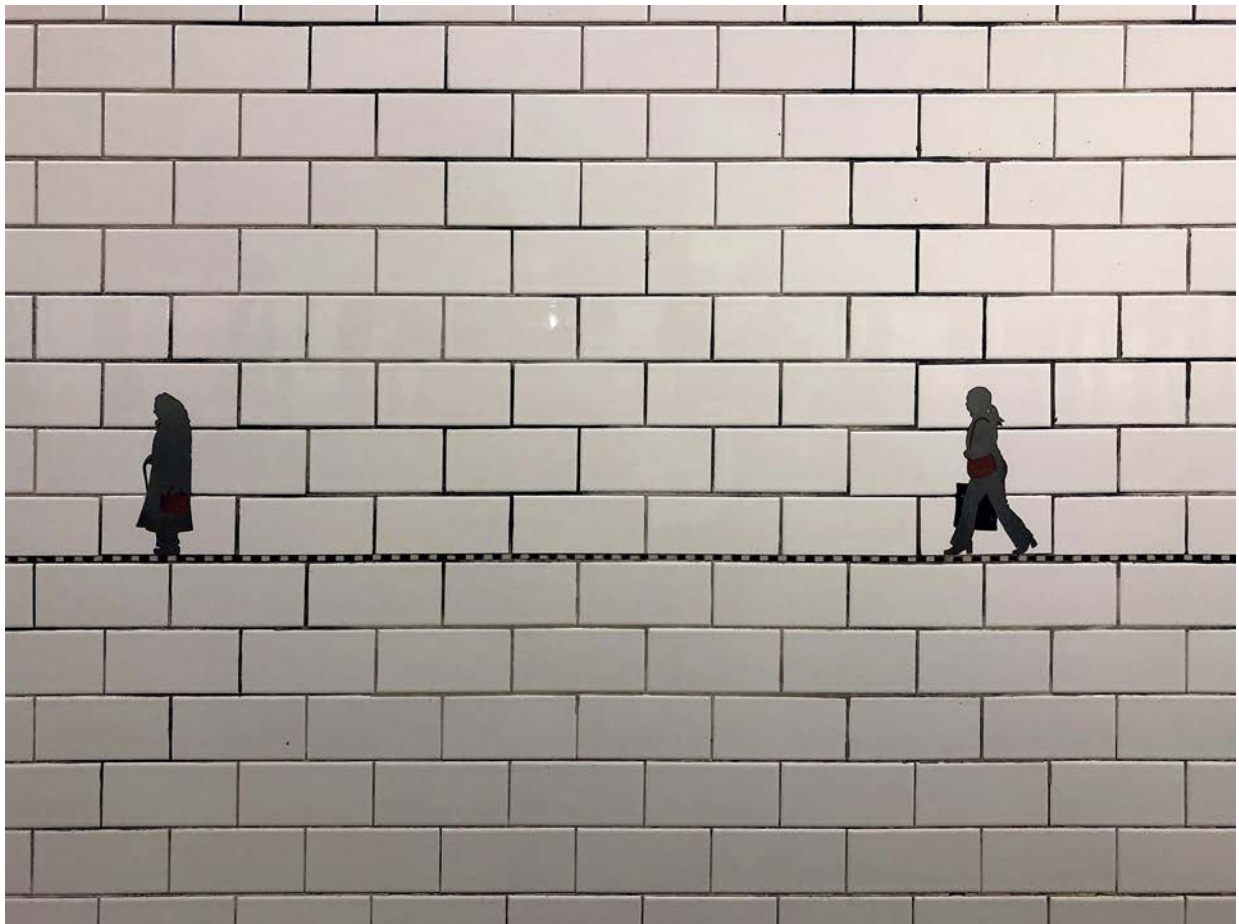
Prince Street (Manhattan) | Janet Zweig and Edward del Rosario | Carrying On | 2004

Documentation

015



016



New York City Subway 31 Contemporary Arts & Design Stations Tour: Station 10

Prince Street (Manhattan) | Janet Zweig and Edward del Rosario | Carrying On | 2004

Documentation

017



018



New York City Subway 31 Contemporary Arts & Design Stations Tour: Station 10

Prince Street (Manhattan) | Janet Zweig and Edward del Rosario | Carrying On | 2004

Documentation

019



020



New York City Subway 31 Contemporary Arts & Design Stations Tour: Station 10

Prince Street (Manhattan) | Janet Zweig and Edward del Rosario | Carrying On | 2004

Documentation

021



022



New York City Subway 31 Contemporary Arts & Design Stations Tour: Station 10

Prince Street (Manhattan) | Janet Zweig and Edward del Rosario | Carrying On | 2004

Documentation

023



024



New York City Subway 31 Contemporary Arts & Design Stations Tour: Station 10

Prince Street (Manhattan) | Janet Zweig and Edward del Rosario | Carrying On | 2004

Documentation

025



026



New York City Subway 31 Contemporary Arts & Design Stations Tour: Station 10

Prince Street (Manhattan) | Janet Zweig and Edward del Rosario | Carrying On | 2004

Documentation

027



028



New York City Subway 31 Contemporary Arts & Design Stations Tour: Station 10

Prince Street (Manhattan) | Janet Zweig and Edward del Rosario | Carrying On | 2004

Documentation

029



030

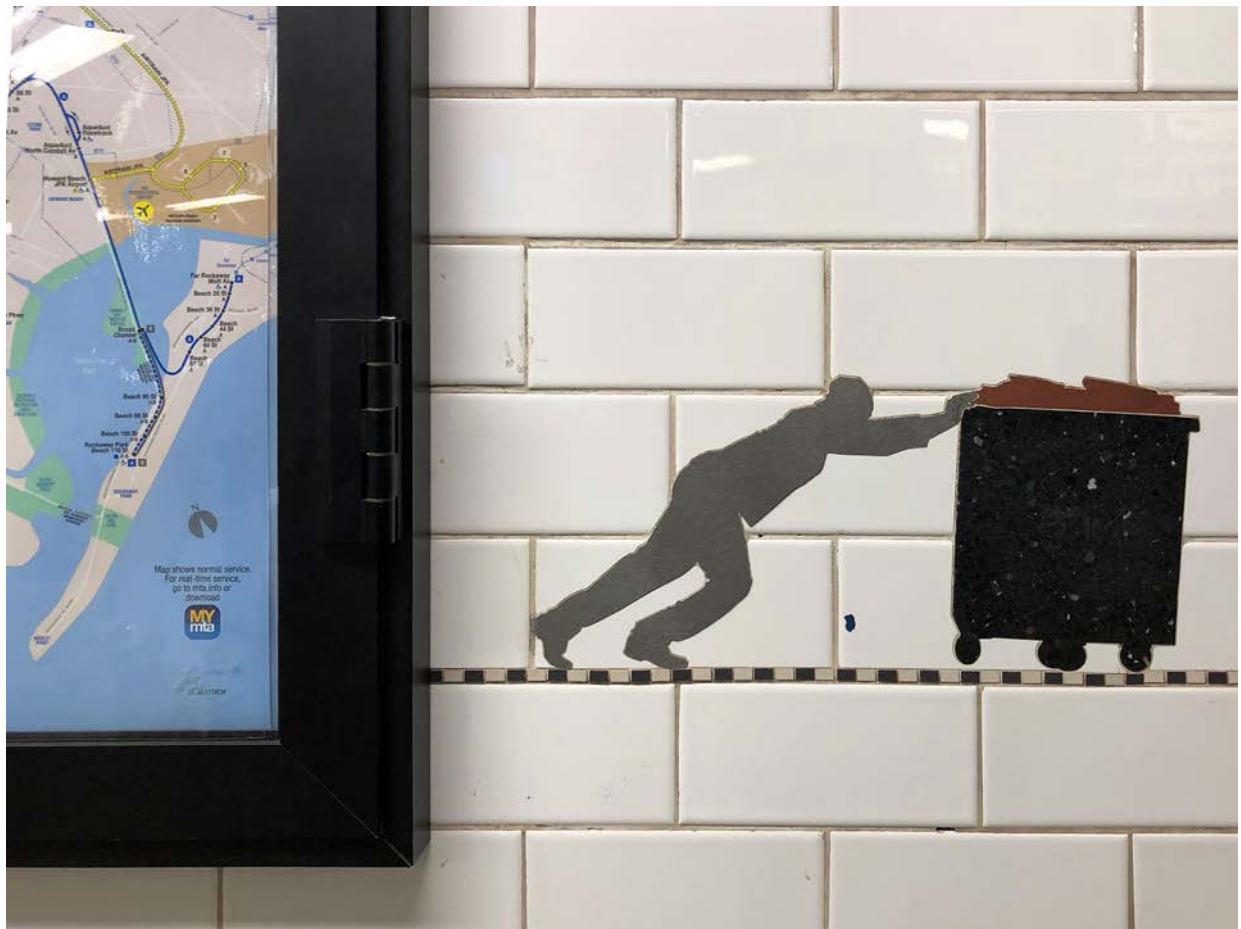


New York City Subway 31 Contemporary Arts & Design Stations Tour: Station 10

Prince Street (Manhattan) | Janet Zweig and Edward del Rosario | Carrying On | 2004

Documentation

031



032



New York City Subway 31 Contemporary Arts & Design Stations Tour: Station 10

Prince Street (Manhattan) | Janet Zweig and Edward del Rosario | Carrying On | 2004

Documentation

033



034



New York City Subway 31 Contemporary Arts & Design Stations Tour: Station 10

Prince Street (Manhattan) | Janet Zweig and Edward del Rosario | Carrying On | 2004

Documentation

035



036



New York City Subway 31 Contemporary Arts & Design Stations Tour: Station 10

Prince Street (Manhattan) | Janet Zweig and Edward del Rosario | Carrying On | 2004

Documentation

037



038



New York City Subway 31 Contemporary Arts & Design Stations Tour: Station 10

Prince Street (Manhattan) | Janet Zweig and Edward del Rosario | Carrying On | 2004

Documentation

039



040



New York City Subway 31 Contemporary Arts & Design Stations Tour: Station 10

Prince Street (Manhattan) | Janet Zweig and Edward del Rosario | Carrying On | 2004

Documentation

041



042



New York City Subway 31 Contemporary Arts & Design Stations Tour: Station 10

Prince Street (Manhattan) | Janet Zweig and Edward del Rosario | Carrying On | 2004

Documentation

043



044



New York City Subway 31 Contemporary Arts & Design Stations Tour: Station 10

Prince Street (Manhattan) | Janet Zweig and Edward del Rosario | Carrying On | 2004

Documentation

045



046

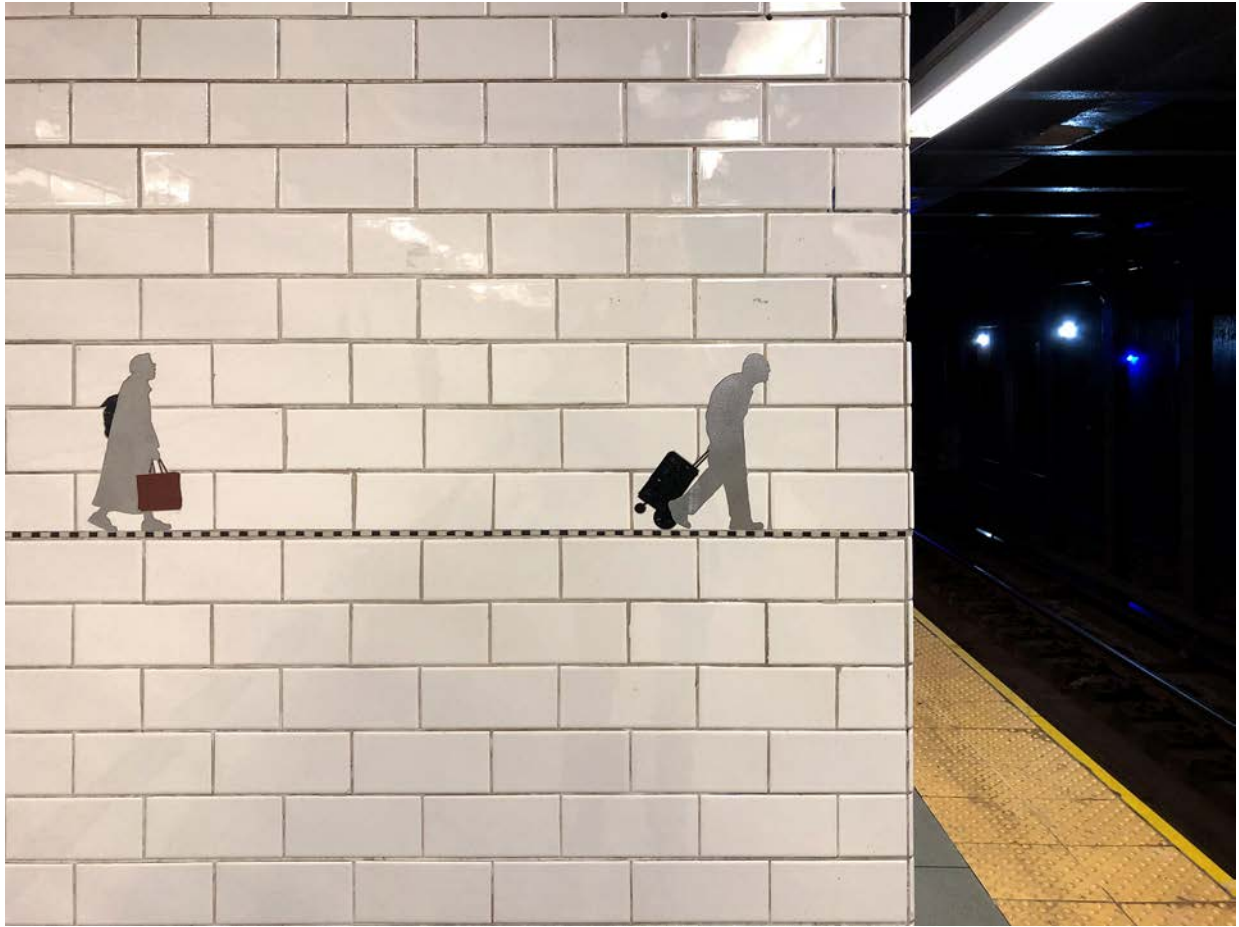


New York City Subway 31 Contemporary Arts & Design Stations Tour: Station 10

Prince Street (Manhattan) | Janet Zweig and Edward del Rosario | Carrying On | 2004

Documentation

047



048



New York City Subway 31 Contemporary Arts & Design Stations Tour: Station 10

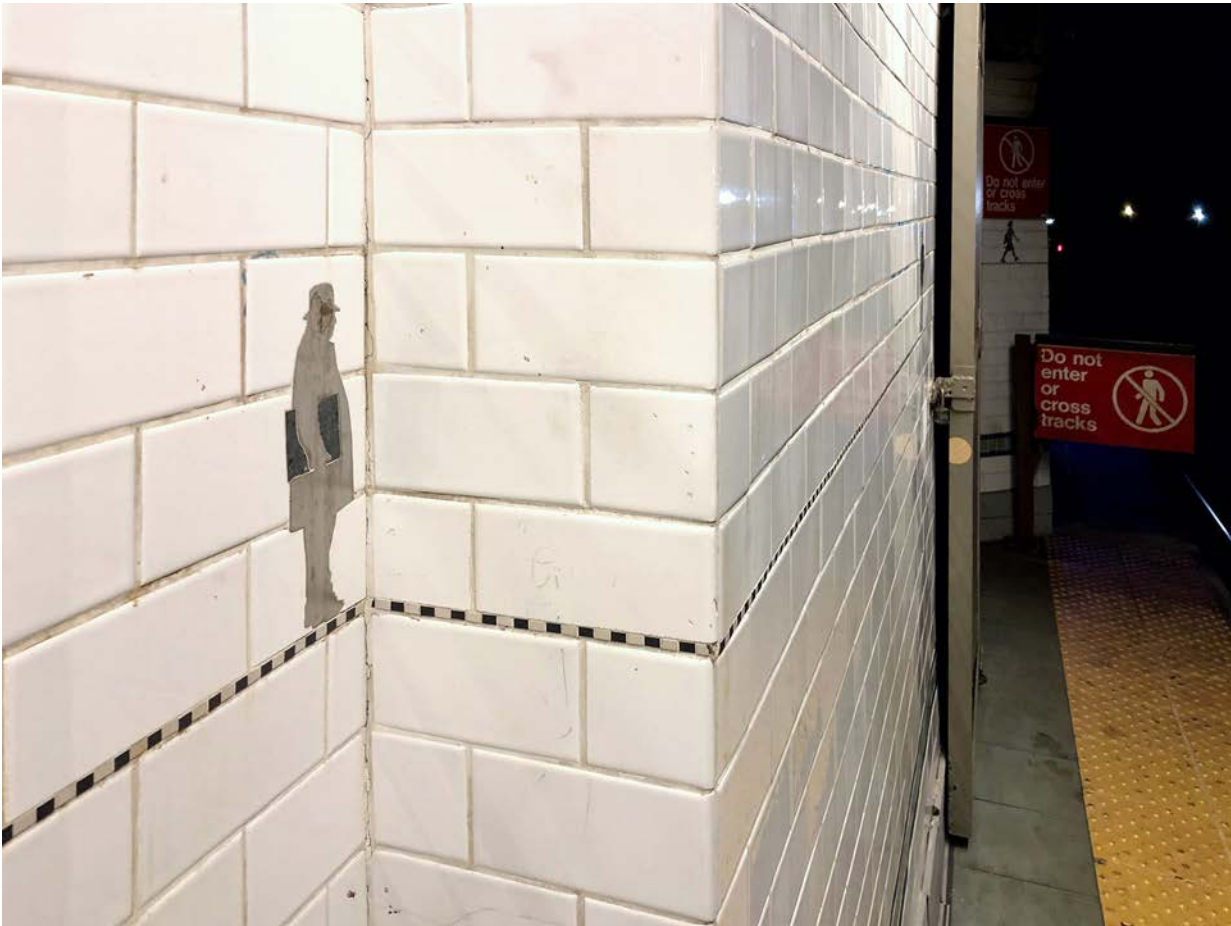
Prince Street (Manhattan) | Janet Zweig and Edward del Rosario | Carrying On | 2004

Documentation

049



050



Photos Renate Sturmer & Patrick J. Schmeper September 2019

New York City Subway 31 Contemporary Arts & Design Stations Tour: Station 10

Prince Street (Manhattan) | Janet Zweig and Edward del Rosario | Carrying On | 2004

Documentation

051



052



New York City Subway 31 Contemporary Arts & Design Stations Tour: Station 10

Prince Street (Manhattan) | Janet Zweig and Edward del Rosario | Carrying On | 2004

Documentation

053



054



New York City Subway 31 Contemporary Arts & Design Stations Tour: Station 10

Prince Street (Manhattan) | Janet Zweig and Edward del Rosario | Carrying On | 2004

Documentation

055



056



New York City Subway 31 Contemporary Arts & Design Stations Tour: Station 10

Prince Street (Manhattan) | Janet Zweig and Edward del Rosario | Carrying On | 2004

Documentation

057



058



New York City Subway 31 Contemporary Arts & Design Stations Tour: Station 10

Prince Street (Manhattan) | Janet Zweig and Edward del Rosario | Carrying On | 2004

Documentation

059



060



New York City Subway 31 Contemporary Arts & Design Stations Tour: Station 10

Prince Street (Manhattan) | Janet Zweig and Edward del Rosario | Carrying On | 2004

Documentation

061



062



New York City Subway 31 Contemporary Arts & Design Stations Tour: Station 10

Prince Street (Manhattan) | Janet Zweig and Edward del Rosario | Carrying On | 2004

Documentation

063



064



New York City Subway 31 Contemporary Arts & Design Stations Tour: Station 10

Prince Street (Manhattan) | Janet Zweig and Edward del Rosario | Carrying On | 2004

Documentation

065



066



New York City Subway 31 Contemporary Arts & Design Stations Tour: Station 10

Prince Street (Manhattan) | Janet Zweig and Edward del Rosario | Carrying On | 2004

Documentation

067



068



New York City Subway 31 Contemporary Arts & Design Stations Tour: Station 10

Prince Street (Manhattan) | Janet Zweig and Edward del Rosario | Carrying On | 2004

Documentation

069



070



Photos Renate Sturmer & Patrick J. Schmeper September 2019

New York City Subway 31 Contemporary Arts & Design Stations Tour: Station 10

Prince Street (Manhattan) | Janet Zweig and Edward del Rosario | Carrying On | 2004

Documentation

071



072



New York City Subway 31 Contemporary Arts & Design Stations Tour: Station 10

Prince Street (Manhattan) | Janet Zweig and Edward del Rosario | Carrying On | 2004

Documentation

073



074



New York City Subway 31 Contemporary Arts & Design Stations Tour: Station 10

Prince Street (Manhattan) | Janet Zweig and Edward del Rosario | Carrying On | 2004

Documentation

075



076



New York City Subway **31** Contemporary Arts & Design Stations Tour: Station **10**

Prince Street (Manhattan) | Janet Zweig and Edward del Rosario | Carrying On | 2004

Documentation

077



078



Photos Renate Sturmer & Patrick J. Schmeper September 2019

New York City Subway 31 Contemporary Arts & Design Stations Tour: Station 10

Prince Street (Manhattan) | Janet Zweig and Edward del Rosario | Carrying On | 2004

Documentation

079



080



New York City Subway 31 Contemporary Arts & Design Stations Tour: Station 10

Prince Street (Manhattan) | Janet Zweig and Edward del Rosario | Carrying On | 2004

Documentation

081



082

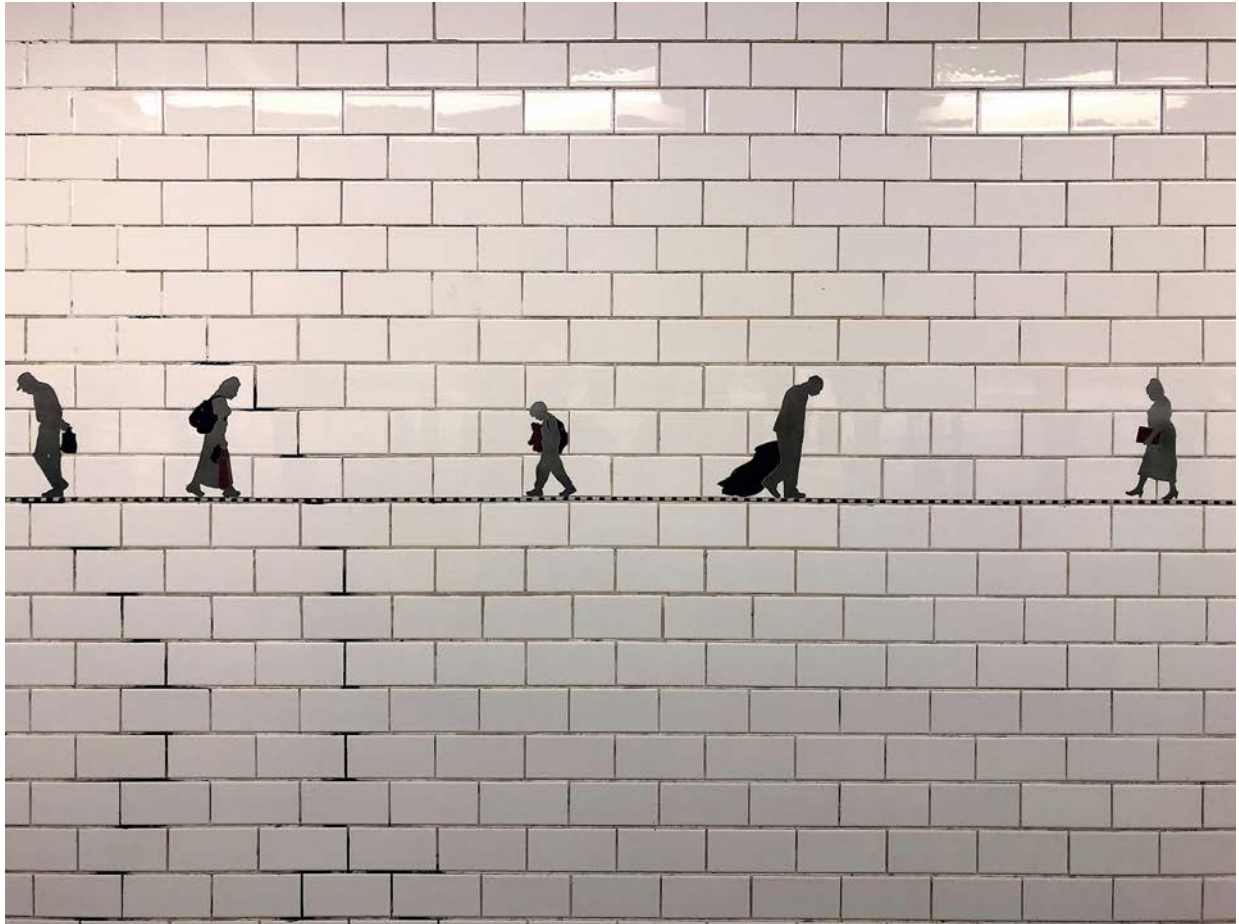


New York City Subway 31 Contemporary Arts & Design Stations Tour: Station 10

Prince Street (Manhattan) | Janet Zweig and Edward del Rosario | Carrying On | 2004

Documentation

083



084



New York City Subway 31 Contemporary Arts & Design Stations Tour: Station 10

Prince Street (Manhattan) | Janet Zweig and Edward del Rosario | Carrying On | 2004

Documentation

085



086



New York City Subway 31 Contemporary Arts & Design Stations Tour: Station 10

Prince Street (Manhattan) | Janet Zweig and Edward del Rosario | Carrying On | 2004

Documentation

087



088



New York City Subway **31** Contemporary Arts & Design Stations Tour: Station **10**

Prince Street (Manhattan) | Janet Zweig and Edward del Rosario | Carrying On | 2004

Documentation

089



090



Photos Renate Sturmer & Patrick J. Schmeper September 2019