



Photo © MTA



**23rd Street  
(Manhattan)  
William Wegman  
Stationary Figures, 2018**

Art on either platform an entry / exit



**Glass mosaic**

William Wegman's *Stationary Figures* features eleven glass mosaic panels of his famed Weimaraner portraits. Photographed with the artist's deadpan sense of humor, the dogs take on human attributes, from wearing street clothes like a shiny raincoat or flannel shirt, to being grouped like passengers as they gaze into space or peer down the platform as if waiting for the train. Situated in bold blocks of color, the larger-than-life mosaic dogs are bursting into space and interacting with commuters. The mosaic fabricator, Mayer of Munich, interpreted the photographs taken for this project by meticulously transforming the facial expressions, skin textures and patterns of the dogs' vibrant attire into glass mosaic. Wegman has lived and worked in the neighborhood for decades, and together with his dogs Flo and her brother Topper they have created images that enliven this busy station. Speaking about the project, Wegman said, «I wanted to create portraits of individual characters, people who you might see next to you on the platform. For these I dressed the dogs in more or less ordinary clothes, nothing too fashionable. I was very interested in the way in which photographs, even the out of focus dogs in the background of some images, could be translated into mosaic by Mayer of Munich, who skillfully turned grey stones into grey dogs.»

— MTA Arts & Design

- YouTube: Giles Huxley-Parlour Introduces Exhibition, William Wegman: Polaroids

*Viele Menschen fühlen sich einsam an einem Ort, der zu den am dichtest besiedelten Gegenden der Welt zählt und haben daher einen Hund, der oft mehr verwöhnt wird als mancher Mensch auf dieser Welt. In der Subway Station 23rd Street wird das auf wunderbare Weise illustriert. Hunde werden zu Menschen und Menschen zu...*

— Patrick J. Schnieper

*Platform uptown 5 mosaic pictures | Platform downtown 5 mosaic pictures | Entry/exit 23 St & 6 Av NE corner 1 mosaic picture*



# New York City Subway 31 Contemporary Arts & Design Stations Tour: Station 30

23rd Street (Manhattan) | William Wegman | Stationary Figures | 2018

Documentation

001



002





# New York City Subway 31 Contemporary Arts & Design Stations Tour: Station 30

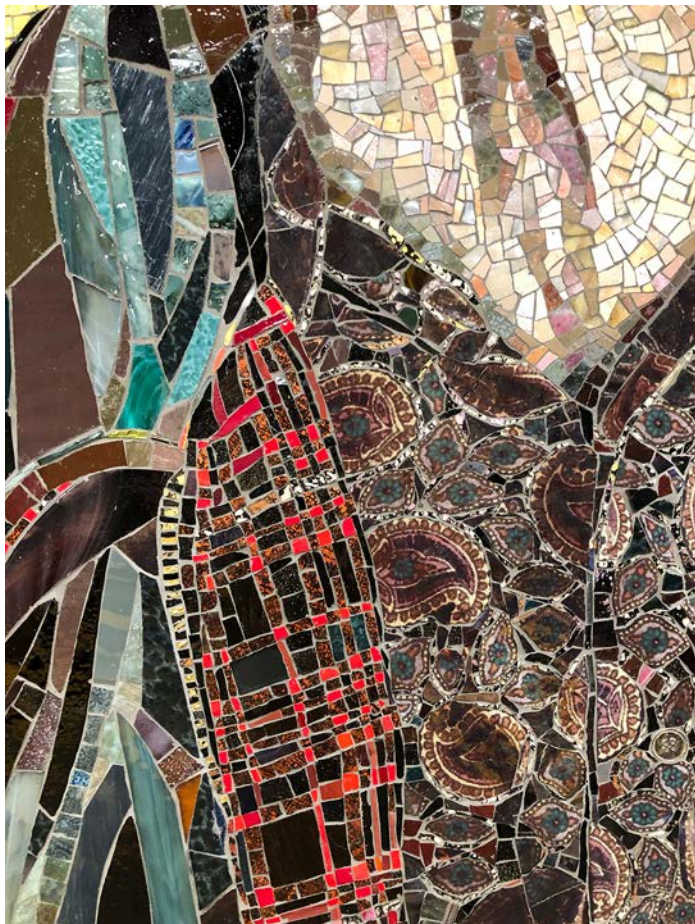
23rd Street (Manhattan) | William Wegman | Stationary Figures | 2018

Documentation

003



004



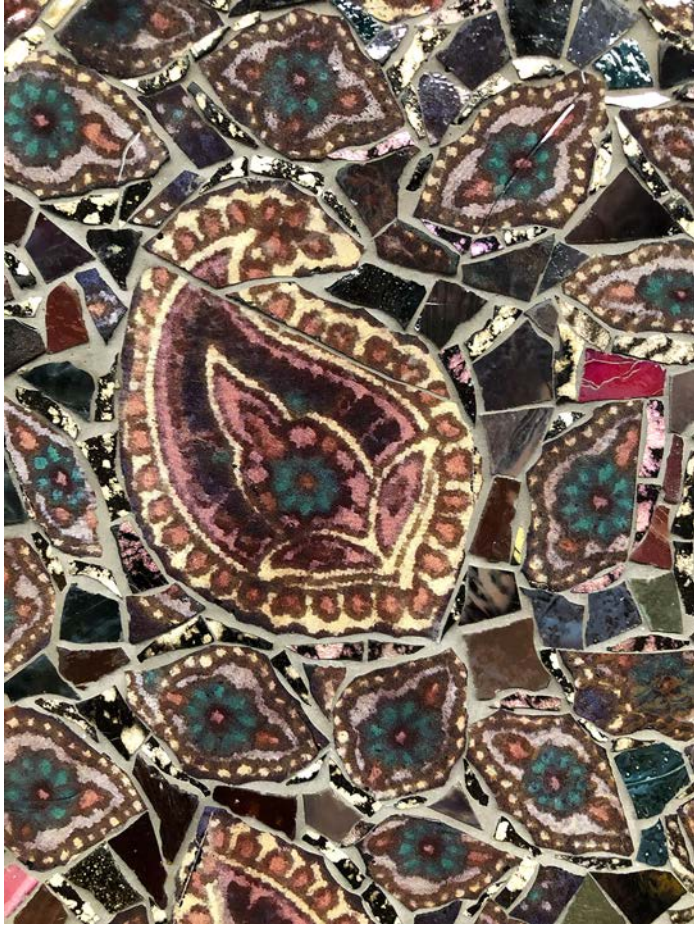


# New York City Subway 31 Contemporary Arts & Design Stations Tour: Station 30

23rd Street (Manhattan) | William Wegman | Stationary Figures | 2018

Documentation

005



006



Photos Renate Sturmer September 2019



# New York City Subway 31 Contemporary Arts & Design Stations Tour: Station 30

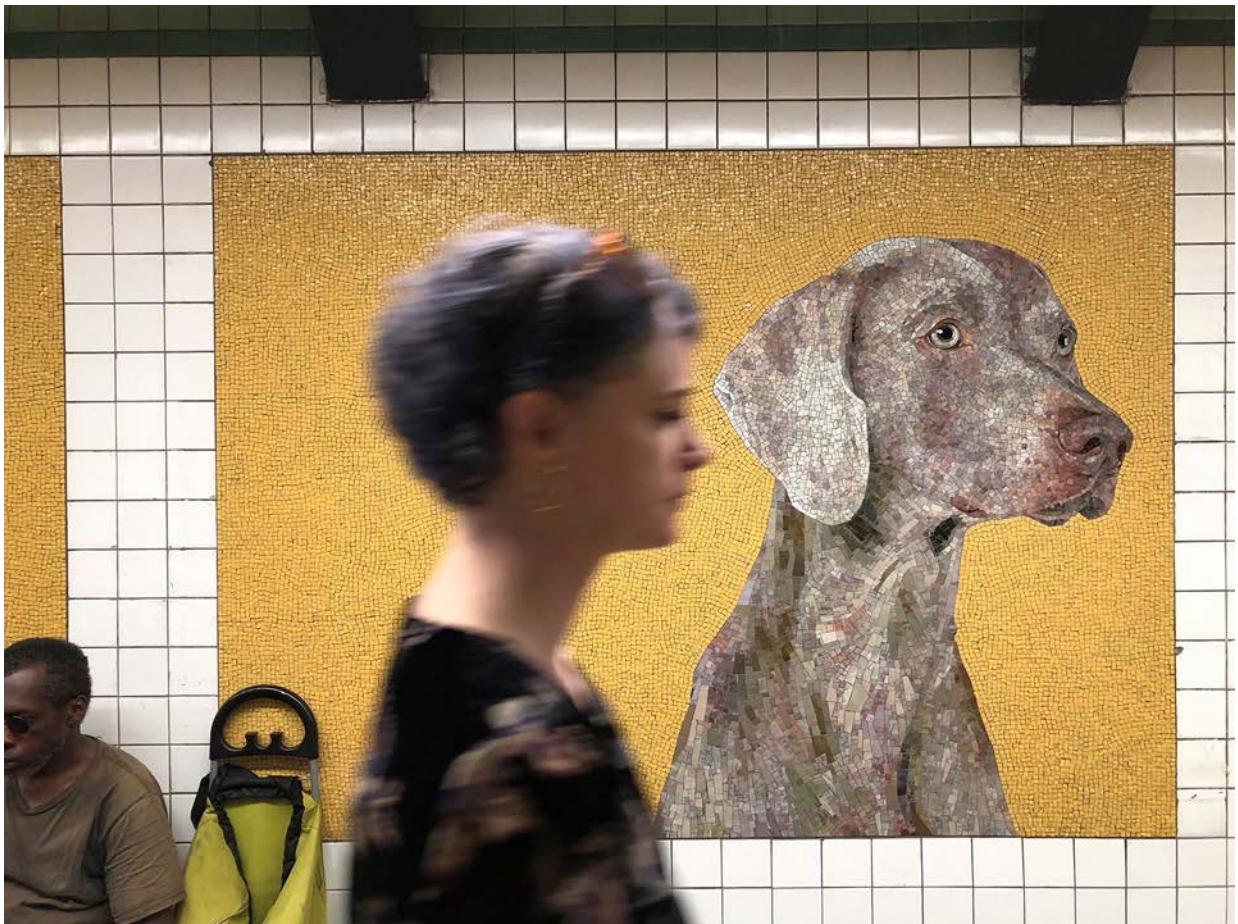
23rd Street (Manhattan) | William Wegman | Stationary Figures | 2018

Documentation

007



008



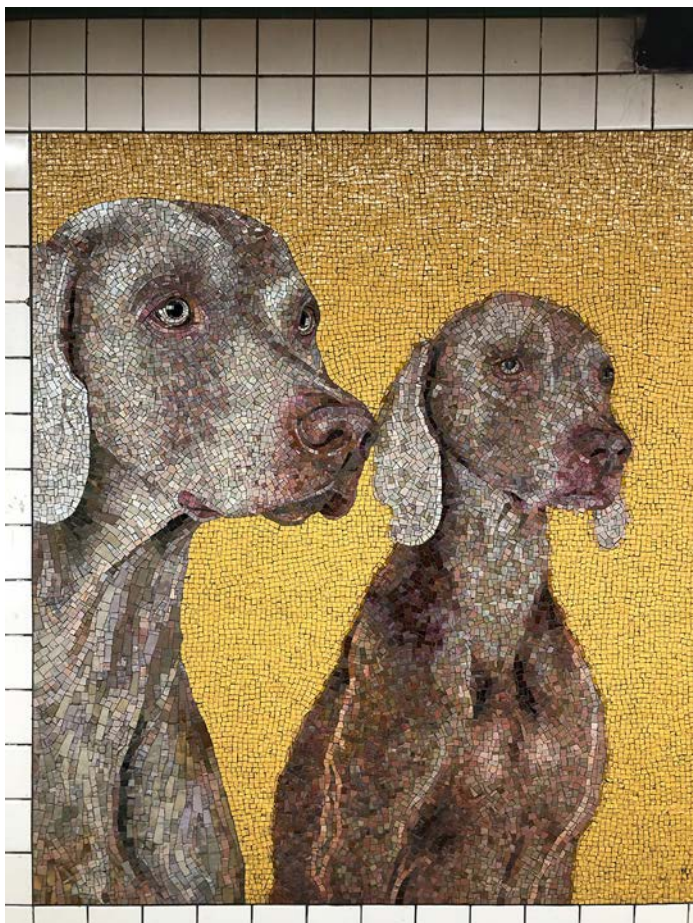
Photos Renate Sturmer, September 2019



009



010





# New York City Subway 31 Contemporary Arts & Design Stations Tour: Station 30

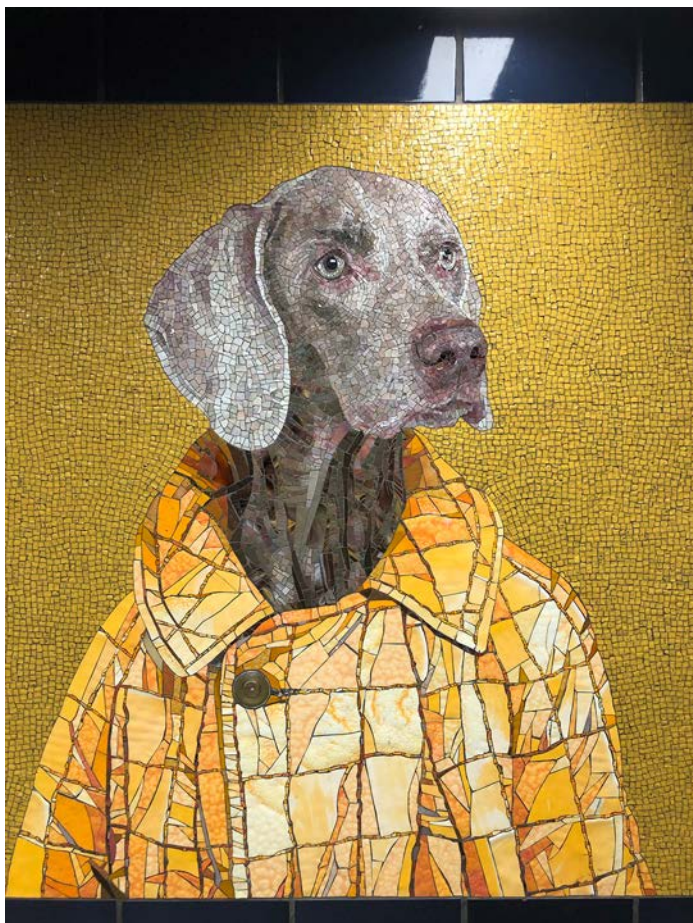
23rd Street (Manhattan) | William Wegman | Stationary Figures | 2018

Documentation

011



012



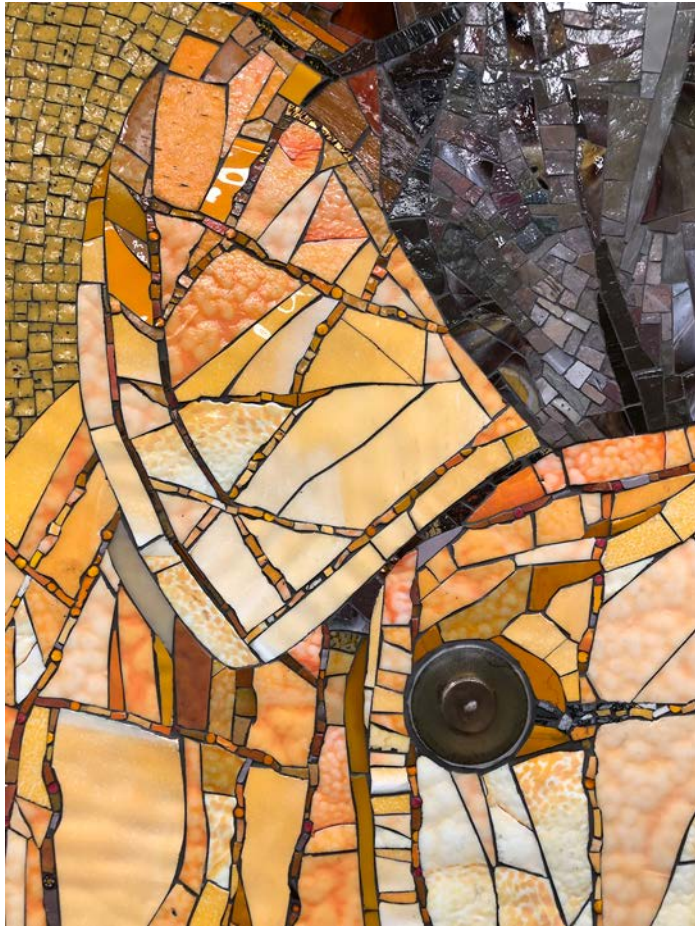


# New York City Subway 31 Contemporary Arts & Design Stations Tour: Station 30

23rd Street (Manhattan) | William Wegman | Stationary Figures | 2018

Documentation

013



014



Photos Renate Sturmer, September 2019



# New York City Subway 31 Contemporary Arts & Design Stations Tour: Station 30

23rd Street (Manhattan) | William Wegman | Stationary Figures | 2018

Documentation

015



016





# New York City Subway 31 Contemporary Arts & Design Stations Tour: Station 30

23rd Street (Manhattan) | William Wegman | Stationary Figures | 2018

Documentation

017



018





# New York City Subway 31 Contemporary Arts & Design Stations Tour: Station 30

23rd Street (Manhattan) | William Wegman | Stationary Figures | 2018

Documentation

019

